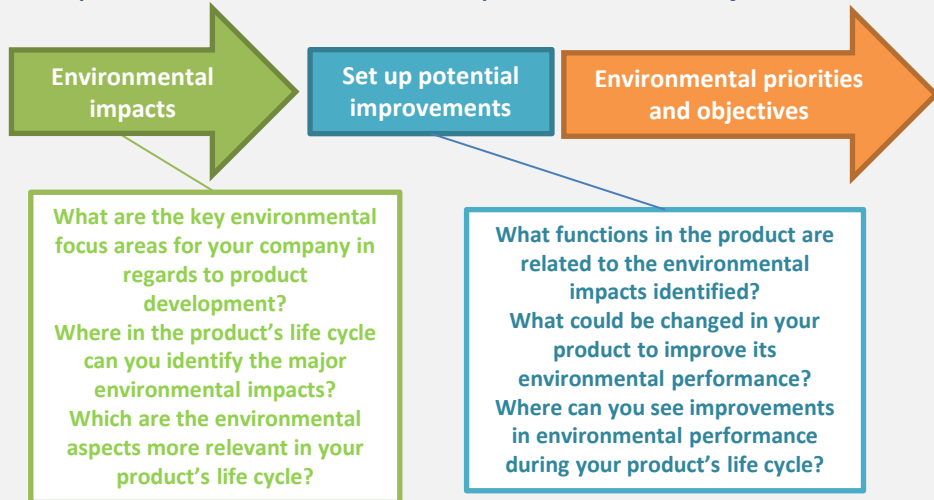


Selecting product-related EPIs in 5 steps



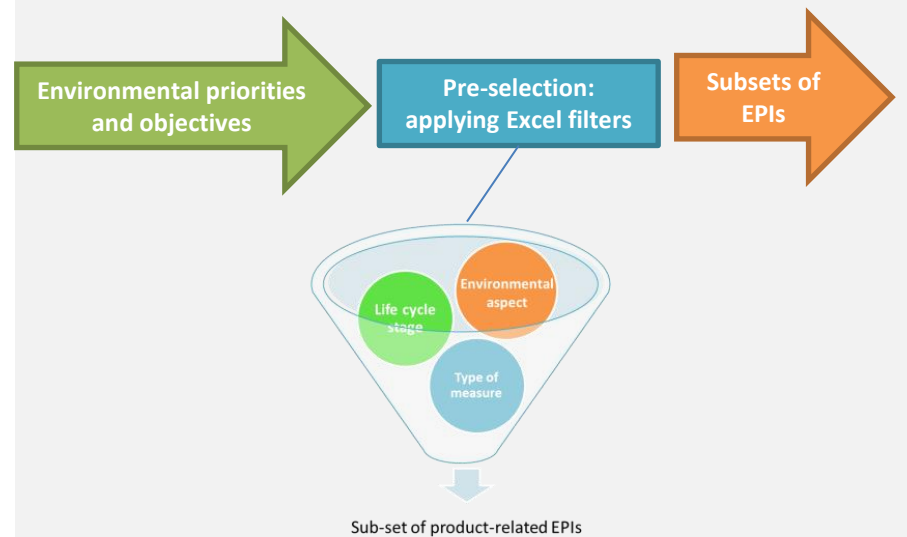
This poster is a support material for the guide: "PRODUCT-RELATED EPIs: A guide to support the selection of product-related EPIs". The Guide proposes a step-by-step procedure to select the most suitable environmental indicators according to your company's goal, in order to improve the environmental performance of the developed products in their whole life cycle. Each step contains the main activities to be carried aiming to select and implement the most suitable EPIs for your company.

Step 1: Define environmental priorities and objectives



Another important way to start performing this step is to identify what your stakeholders expect in terms of environmental efforts and achievements, considering also market's needs, legislation, image improvement, labeling, etc., and establish potential improvements for your products to improve their environmental performance.

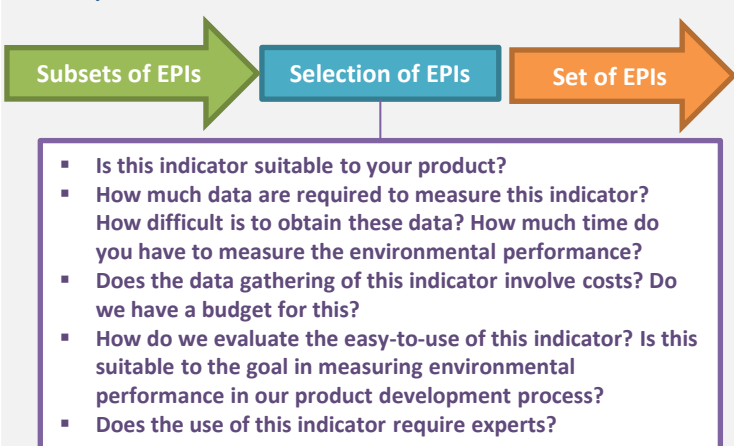
Step 2: Pre-select EPIs



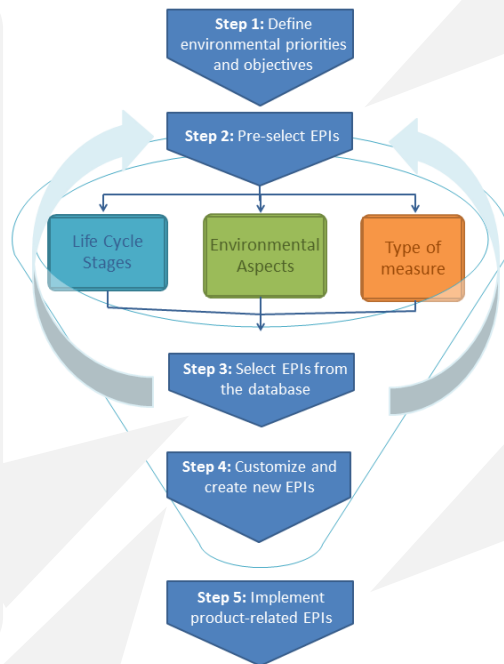
Step 2 in selecting product-related EPIs consists in the pre-selection of the indicators the **Product-related EPIs Database**. This procedure can be applied several times, as an iterative step, and for each sub-set of indicators obtained you should go for step 3.

*For more information about the classification criteria, check the Appendices of the Guide.

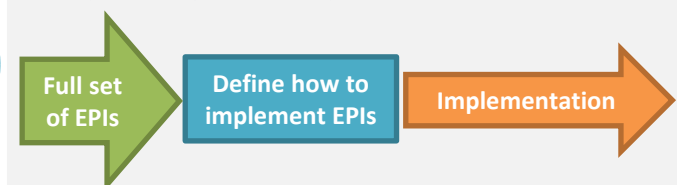
Step 3: Select EPIs from the database



The selection of EPIs from the subsets is based in a set of criteria in applying and measuring the indicators. The main question to be answered here is: which are the fundamental indicators to be selected?



Step 5: Implement product-related EPIs

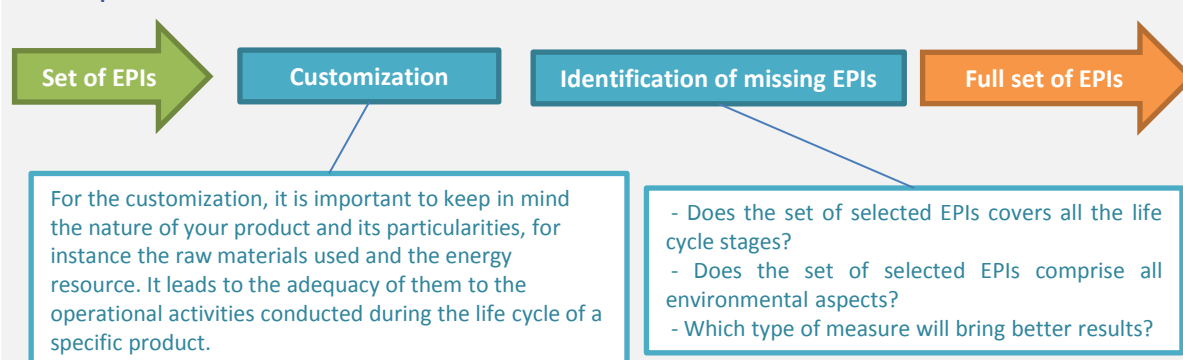


You should define:

- Responsible for measuring:** define who will be responsible for measuring and communicating the product-related EPIs;
- Period of tracking:** define how often the indicators will be measured;
- Improvement:** define goals to improve the environmental performance, and also the responsible staff to achieve them;
- Communication:** define who will be communicated about the results of the environmental performance measurement.

It should be also defined when a new selection of indicators for product development is required.

Step 4: Customize and create new EPIs



Authors: Isabela Issa, USP Environmental Engineering
 Daniela Pigosso, DTU Mechanical Engineering

Supervisors: Henrique Rozenfeld, USP Industrial Engineering
 Tim McAlone, DTU Mechanical Engineering

